

ESTORIL CIRCUIT

Exceeds expectations

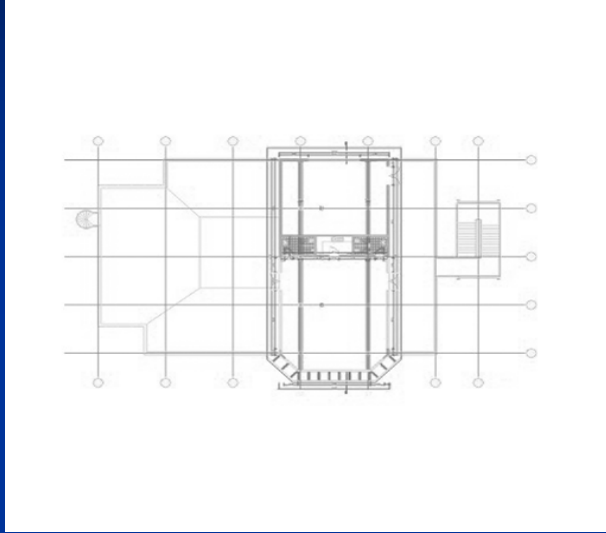
LOCALIZATION AND ACCESSES

- In the heart of the Estoril Coast, the Estoril Circuit is located in a high quality tourist area, being this privileged location and the quality of its services, the reason of its great success.
- A wide range of cultural, sportive and tourist experiences as well as an extensive choice of more than 20 five-star hotels awaits the visitor to the Estoril Circuit. Furthermore, Lisbon the well known capital of charm and its surroundings with almost 2.500.000 inhabitants is only twenty minutes away by car.
- Just outside the capital Lisbon, the Estoril Circuit has excellent accesses:
- Lisbon International Airport at 30 Km / 20 min.
- Aeródromo Municipal de Cascais – Tires at 10 Km / 10 min. This modern infra-structure, it is nowadays considered the 2nd airport infra-structure in the Lisbon area.
- Road Accesses:
 - A5 / IC 19 / A16/ Estrada Marginal
- The new Hospital (Group HPP) is just 4 Km away from the Circuit. This is a modern unit with the most advanced technologies.

MAIN ENTRANCE



VIP AREA



- Location – 2nd floor Control Tower
- Room with 124 m2 with air conditioning and heating.
- Marquee with 200 m2 and Terrace with access through the terrace over the pit-boxes.



VIP VILLAGE TERRACE

- Terrace with 3.715 m² (on top of the pit-boxes)
- 3 stair accesses
- Lift
- Restrooms



VIP VILLAGE TERRACE

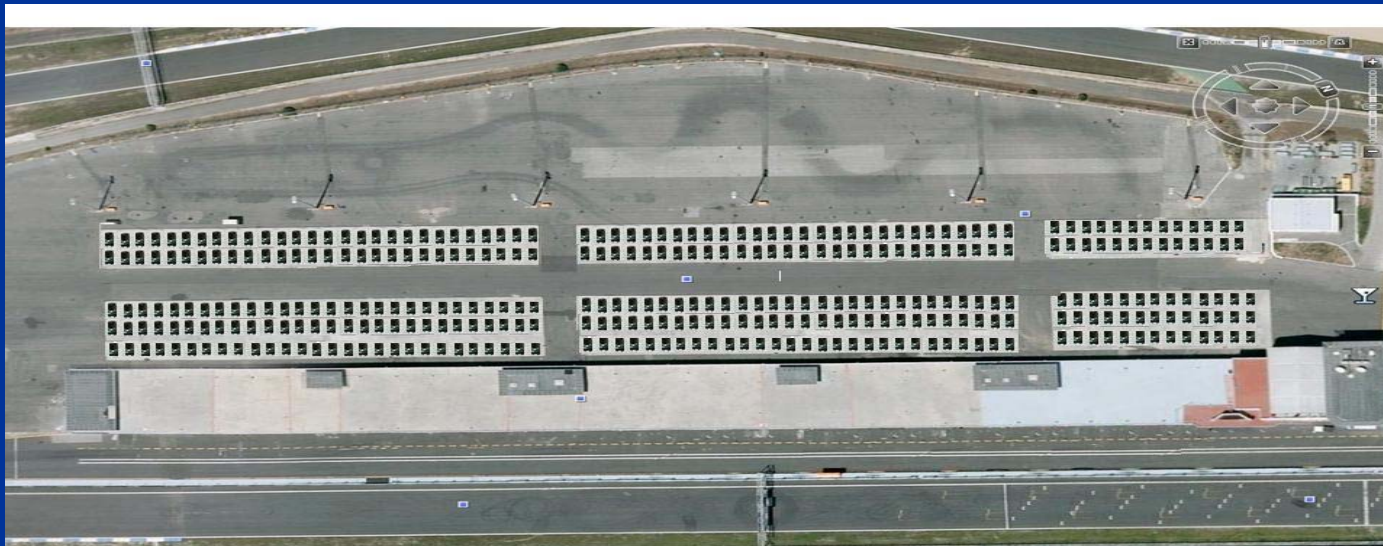


PADDOCK



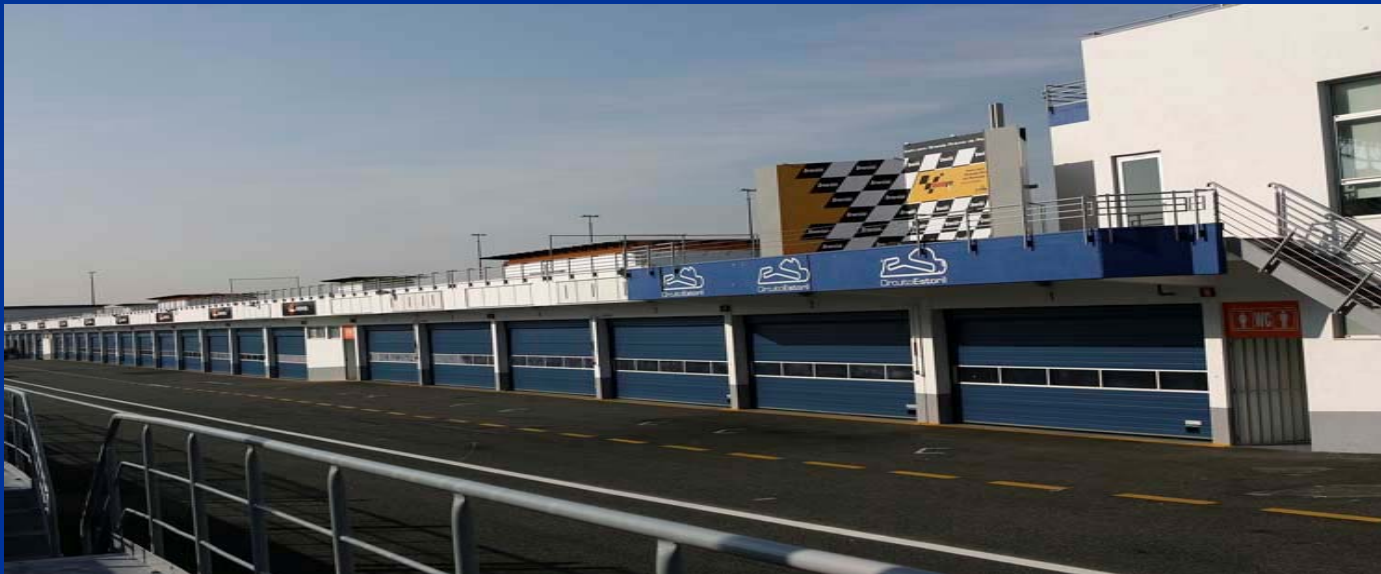
PADDOCK

- Total area of 31.500 m²
- Several electricity and water points



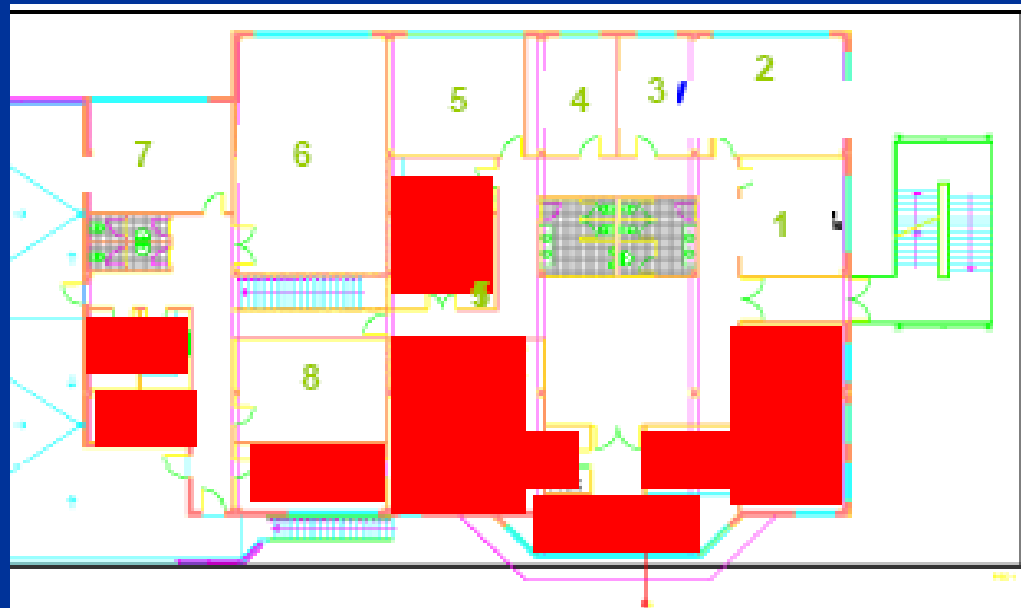
PIT-BOXES

- Pit-box building with 30 garages
- Dimensions of each garage is 17 m X 6,70 m
- 2 Gates: Height/ Width 2,75 m / 6,00 m Pit Lane – 3,40 Paddock
- Electricity 200v CEE / 380v 16A & 32A
- Water supply in each garage



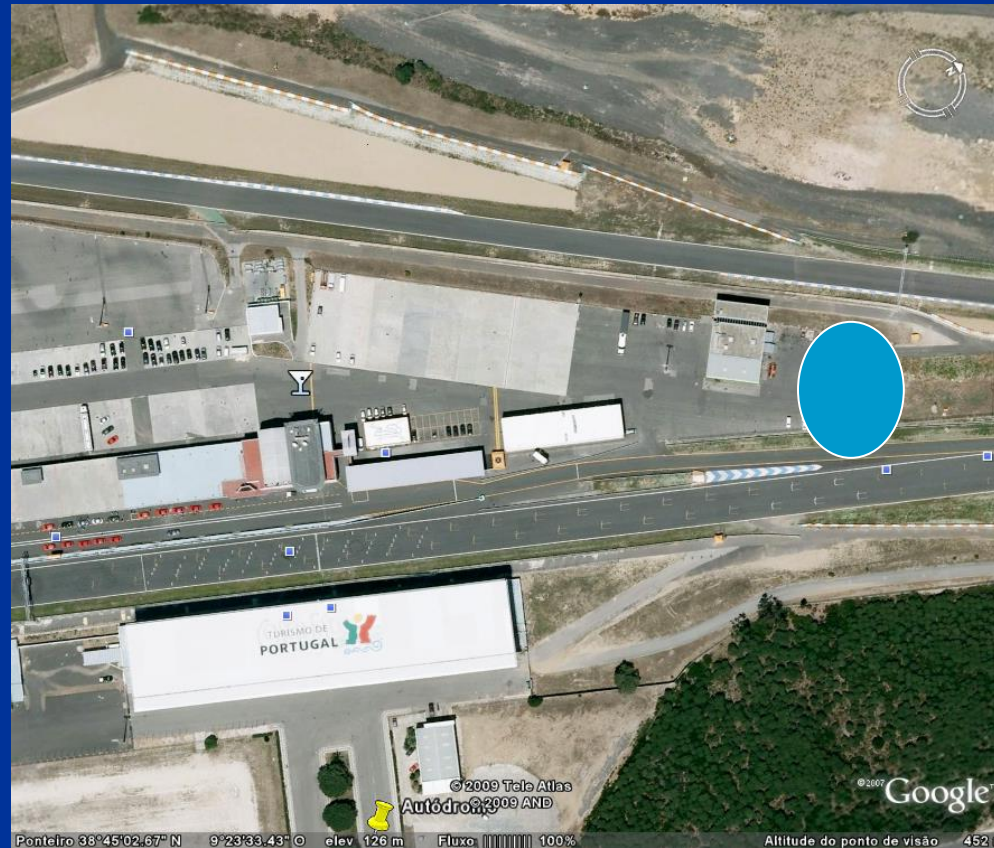
ROOMS AT CONTROL TOWER

- On the 1st floor of Control Tower, there are several rooms that can be used as offices during the organization of your event.



HELIPORT

- The Estoril Circuit has its own heliport.



TECHNICAL INFORMATION

- FIA homologation – Grade 2+1T.
- Track length: 4.140 m
- Longest straight (start /finish): 985,686 m
- Start / Finish straight width: 14 m;
- Track width: 10m – 18m
- **GRADIENT**
 - MAX. of rise: 6,75%
 - MAX. of fall: 5,56%

5 star HOTEL ACCOMODATION INFO

- Grande Real Villa Itália Hotel & Spa
 - www.granderealvillaitaliahotel.com
- Penha Longa Hotel & golf Resort
 - www.penhalonga.com
- Hotel Palácio & Golf
 - www.palacioestorilhotel.com
- Hotel Cascais Miragem
 - www.cascaismirage.com
- Fortaleza do Guincho Hotel
 - www.guinchohotel.pt
- Hotel Albatroz
 - www.albatrozhotels.com

Grandstands

- Grandstand A – permanent
- Grandstand B – permanent
- Grandstand E - permanent



GRANDSTAND A

- Main grandstand located at the main straight
- Capacity 5.000 seats
- Access Main Entrance
- Bares
- Restrooms



GRANDSTAND B

- Location main straight
- Capacity 5.500 seats
- Access Main Entrance
- Bares
- Restrooms



GRANDSTAND E

- Location inside the circuit
- Capacity 13.000 seats
- Access through Estrada da Ribeira da Penha Longa
- Bares
- Restrooms



ESTORIL CIRCUIT

- Besides being the country's most prestigious circuit, known worldwide through historical races such as F1 or MotoGP, we have a winning team to make each and every Event an unforgettable moment.
- Join many successful national and international companies by organising your next Event here at Estoril.

ESTORIL CIRCUIT

